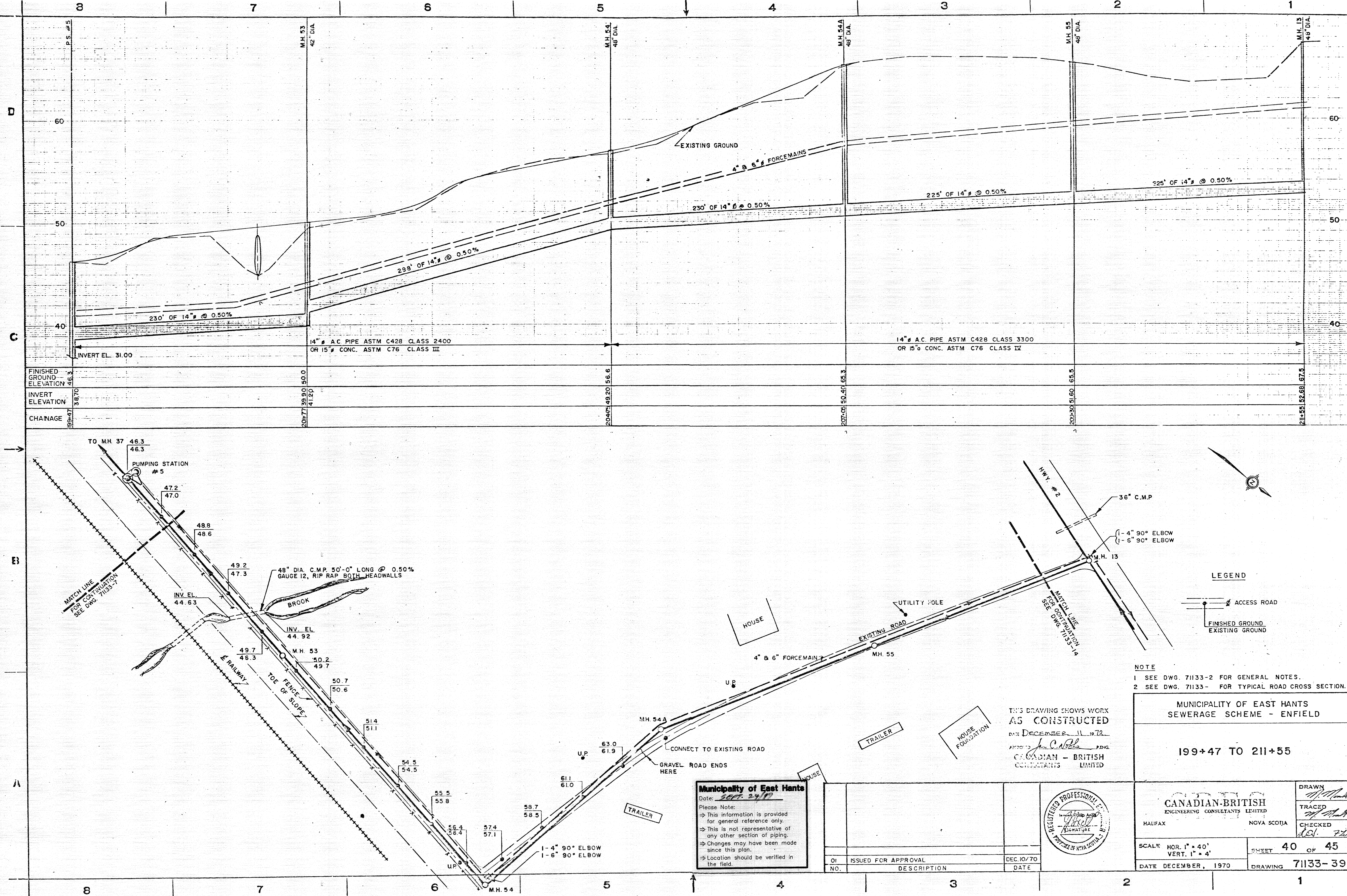


Consulting Draw No.
CBCL 71133-39



NOTE
1 SEE DWG. 71133-2 FOR GENERAL NOTES.
2 SEE DWG. 71133- FOR TYPICAL ROAD CROSS SECTION.

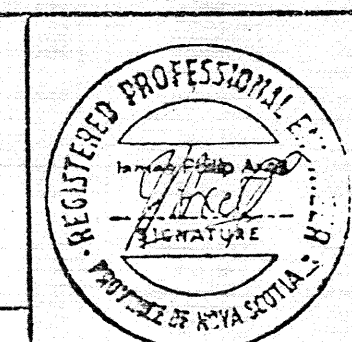
THIS DRAWING SHOWS WORK
AS CONSTRUCTED
DATE DECEMBER 11, 1972
APPROVED: *John C. Noble* P.E.
CANADIAN - BRITISH
CONSULTANTS LIMITED

MUNICIPALITY OF EAST HANTS
SEWERAGE SCHEME - ENFIELD

199+47 TO 211+55

Municipality of East Hants
Date: SEPT. 24/72
Please Note:
⇒ This information is provided
for general reference only.
⇒ This is not representative of
any other section of piping.
⇒ Changes may have been made
since this plan.
⇒ Location should be verified in
the field.

NO.	DESCRIPTION	DATE
01	ISSUED FOR APPROVAL	DEC. 10/70



CANADIAN-BRITISH ENGINEERING CONSULTANTS LIMITED HALIFAX NOVA SCOTIA		DRAWN <i>John C. Noble</i> TRACED <i>John C. Noble</i> CHECKED <i>John C. Noble</i>
SCALE: HOR. 1" = 40' VERT. 1" = 4'	DATE DECEMBER, 1970	SHEET 40 OF 45 DRAWING 71133-39